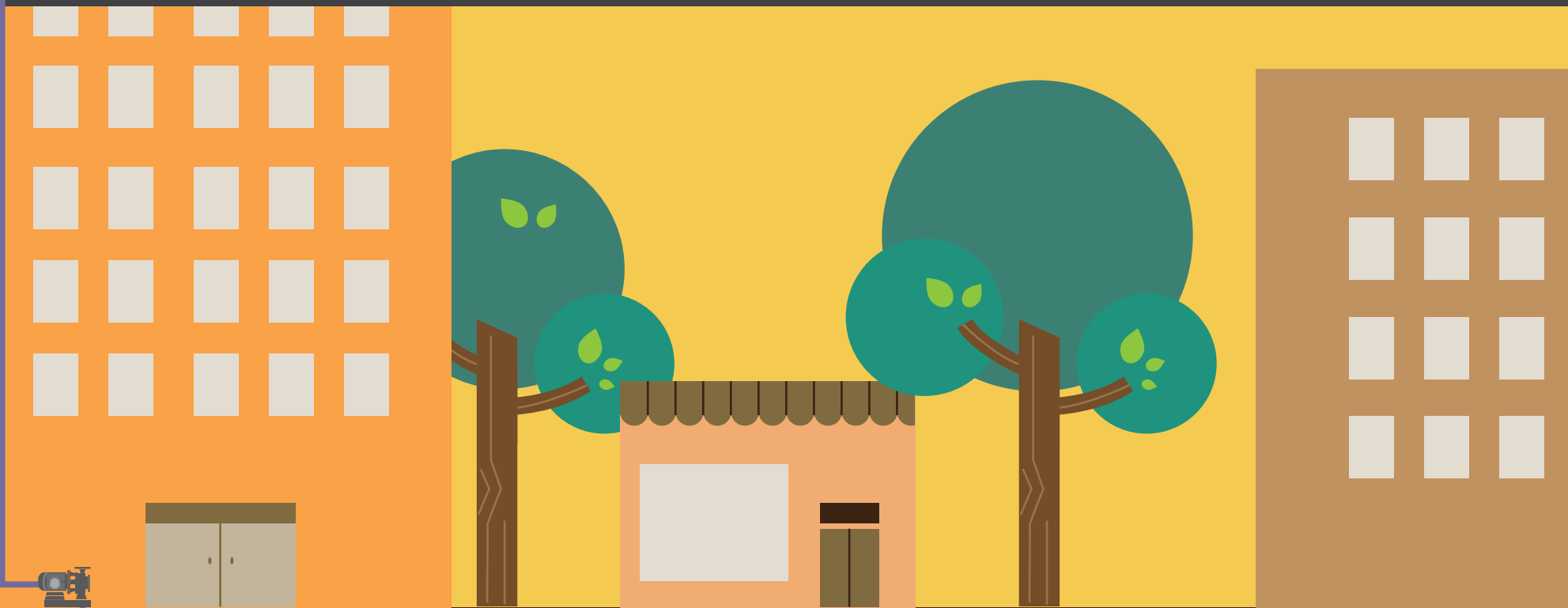


BACKFLOW

Plan Check

Backflow Testing

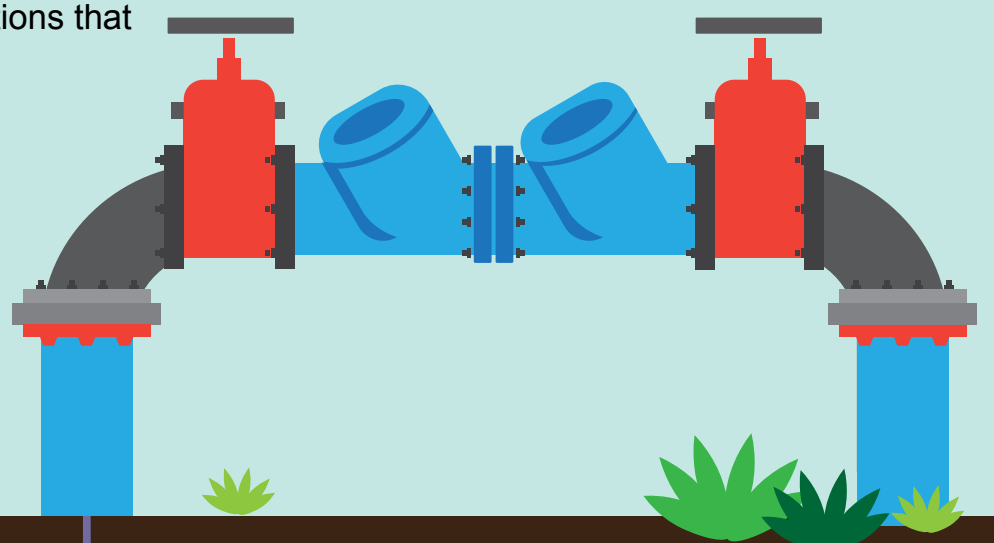
Backflow Troubleshooting



When is a backflow required?

External backflow protection, may be required at locations that meet the following criteria:

- 1 Three stories or greater in height
- 2 Below ground grease interceptor on-site
- 3 Hazardous chemicals on-site
- 4 Pump tied into waterline
- 5 Dedicated irrigation account
- 6 Additional on-site hazards



PLAN-CHECK

What type of backflow is required?

For most applications a Reduced Pressure Principle backflow assembly will be required. The assembly must be low-lead content and be approved by USC. In a few cases a Double Check (DC) assembly may be acceptable. If you believe this is the case, please check with the Cross-Connection Control Specialist. The list of USC approved assemblies can be found here: <http://fccchr.usc.edu//list.html>

The Plumbing Plancher has said I need backflow approval, what do I do?

Over the counter plan-checks are available at the engineering development desk. Please visit the Water Department at 1800 E Wardlow Rd. between the hours of 8AM and 4PM. They will want to see your fixture list, water meter location and proposed backflow location, make, model and size (if any).

What if there is already a backflow there?

If the backflow is existing, it will need to be inspected prior to approval. Please contact the engineering development desk at 562-570-2427 with the assembly's serial number to schedule its inspection.

I've installed my new backflow, now what?

Please call the Cross-Connection Control Specialist to schedule its testing, free of charge.

BACKFLOW TESTING

When does my backflow need to be tested?

Backflow Assemblies are required to be tested annually. The Long Beach Water Department provides this service free of charge during normal business hours.

But I already got a letter this year and hired someone to test my backflow. Why does it have to be tested again?

There are two types of backflows, internal and external. External are usually outside near your water meter. These backflows the ones LBWD wants to test. It is likely that the letter you received was from the Health Department regarding internal backflows.

A private company has notified me that they are working for the Long Beach Water Department and are here to test my backflow. Is this true?

LBWD does contract out some testing. Please call the Cross-Connection Control Specialist to verify if this is the case.

I cannot have the water turned off for testing during normal business hours, what do I do?

You are free to hire any backflow tester that is certified by the Los Angeles County Department of Public Health. They will be able to test for you off hours. You will be responsible for all fees. For a list of certified testers working in the City of Long Beach, please call the Cross-Connection Control Specialist.

BACKFLOW TROUBLESHOOTING

My backflow was stolen, damaged or is leaking, what do I do?

Please call the Cross-Connection Control Specialist.

The Cross-Connection Control Specialist can be reached at 562-570-2415